

IS300 CATALOG

## Servo Drives

Custom drive packages are available to match customer-specified motors, including servo and stepper drives



## Standard Duty Fixed Speed Motors

### Specifications/Features

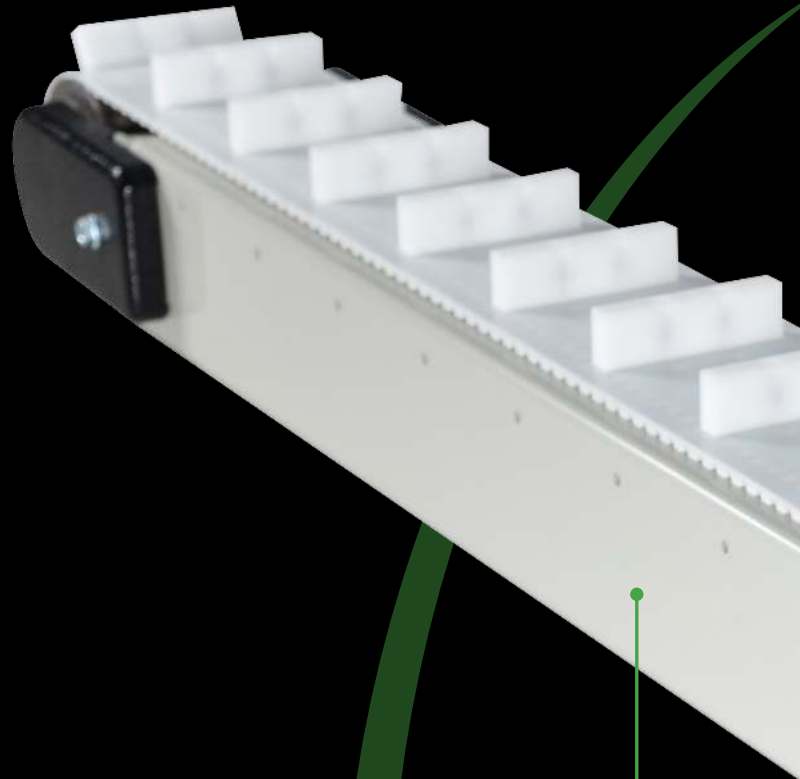
- » Available in 40 Watt, 90 Watt and 200 Watt gearmotors as well as 115V & 230V Single Phase, and 230V Three Phase
- » 40 Watt Variable Speed Electric Gearmotor available with housed controller attached alongside the motor
- » NEMA 4X controller can be used to achieve variable speed capabilities



## Heavy Duty Fixed and Variable Speed Motors

### Specifications/Features

- » Available in 115V & 230V Single Phase, and 230V & 460V Three Phase, and 90V DC
- » Optional Controllers for both AC and DC Heavy Duty Motors



### Rigid Steel Frame

- » 10 gauge steel powder coated frame construction supports heavy loads

### Specifications

- » Widths: up to 18"
- » Lengths: up to 24'
- » Profile: 3.76" high
- » Belt: 10mm pitch teeth
- » Speeds: Up to 1,000 FPM
- » Load Capacity: up to 1000 lbs

# The Smart Conveyor

IS300 conveyors are ideal for applications where precision indexing is required. Timing belts make them incredibly accurate, especially for applications where they interact with robots or other automated tasks.

## Precision Indexing

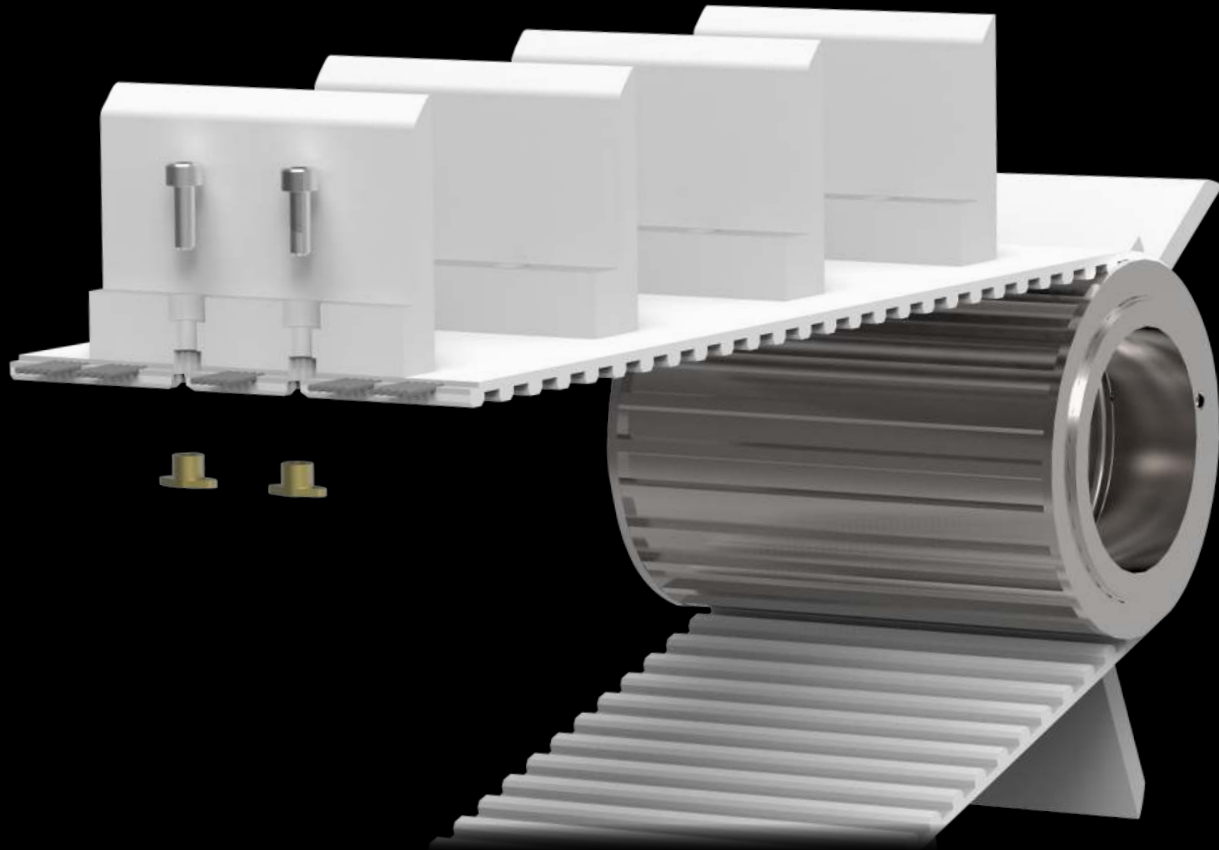
- » Tolerance to register a part to within  $\pm.015''$  without sensors

## Timing Pulley

- » 22- or 25-tooth, positive, non-slip drive pulleys
- » Self-aligning drive bearing with seals
- » Bearings can be lubricated rapidly without drive removal
- » One revolution of the 22-tooth pulley equals 220mm of belt travel; the 25-tooth pulley equals 250mm of belt travel

# Cleated Belts

Convertible timing belt cleats are easily attached or removed to meet changing application requirements without disassembling the belt.

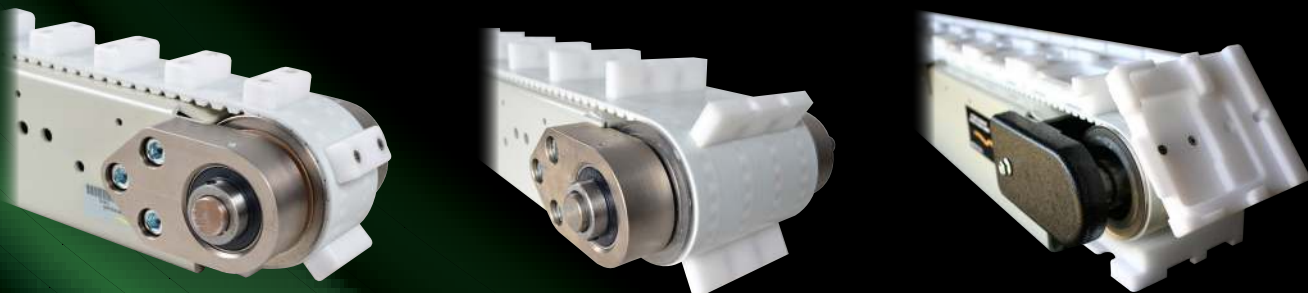


## Specifications

- » Cleats are placed at 10mm increments
- » Made from polyurethane material
- » Cleat height: 0.5" - 3"
- » Cleat width min: 1.3"
- » Cleat width max: 1" smaller than belt width

## Custom Cleats

Timing belt cleats can be custom molded to fit any application or product. Custom cleats are also easily attached and removed.



# Stands

## Aluminum Stands

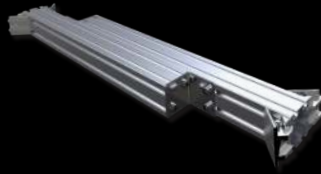
Aluminum stands are our most popular support option. They offer adjustability in an economical package.

No additional mounts are required. Note: Conveyors 6" wide and under will have the stand framework on the outside of the conveyor. The minimum height available for these conveyors is 18 inches. Low height stands are available with a minimum height of 4 inches.

## Cross Ties

Cross ties increase the stability of the stands. It is suggested that a set of cross ties is ordered for every 12' of conveyor.

Note: Aluminum stands sold separately.



## Outrigger Stands

The Aluminum Outrigger Stand offers a wider base for enhanced stability, especially for narrow conveyors.

Note: No additional mounts are required.



## Angle Braces



For use with aluminum stands.

Note: When used with casters, angle braces must be used on both stands. Angle brace cannot be used on inclines or declines.

## Casters



Order two per stand.

Swivel locking casters should only be used with stands that are 1/3 as wide as they are tall.

## Drop In Tee Nuts



Can be inserted into Tee Slots on conveyor stands. M6 thread.

# Learn More

## Additional Products Available from QC Conveyors

In addition to our indexing IS300 conveyors, we offer a variety of other products. Other options in our **Industrial Series** include IS125 conveyors built for heavier loads and IS175-ID conveyors with an embedded drive. **Automation Series** conveyors are built on a rigid aluminum frame, and **HydroClean Series** conveyors are built on a stainless steel platform with a design that makes them easy to clean. Please visit our website or contact your local distributor for more information.



### qcconveyors.com

QC Conveyors' website — [qcconveyors.com](http://qcconveyors.com) — is your resource for the most up-to-date information about all of our products.



### Conveyor Configurator

Configure & quote conveyors online, 24 hours a day. See page 8 for more information.



### Your Local Distributor

Contact our sales department today at (513) 753-6000 to find your local distributor.



(513) 753-6000 | [qcconveyors.com](http://qcconveyors.com) | Part # MKTG-IS300-0119



THE DURAVANT FAMILY OF COMPANIES

ARPA | FISCHBEIN INTERNATIONAL | FMH CONVEYORS | HAMER-FISCHBEIN | KEY TECHNOLOGY | MARLEN INTERNATIONAL | MESPACK | OHLSON | QC CONVEYORS

[www.duravant.com](http://www.duravant.com)